

## Light Commercial

### TU48HKI/TU48H30

#### General Features

- High Ceiling Applications
- Comfortable Airflow
- Water Drainage Pump
- 3 Dimensional Blade for quiet operation
- Flexible Installation
- Easy Maintenance
- Microcomputer Control
- Wireless Controller, Optional wired Controller



#### Unit Performance:

|                                 |                      |
|---------------------------------|----------------------|
| <i>Cooling:</i>                 |                      |
| Capacity (Min-Rated-Max, Btu/h) | 20,400-48,000-50,500 |
| SEER                            | 16                   |
| EER                             | 8.7                  |
| <i>Heating:</i>                 |                      |
| Capacity (Min-Rated-Max, Btu/h) | 17,500-54,500,61,500 |
| HSPF                            | 9                    |
| COP (W/W)                       | 3.3                  |

\*\*\*\*

#### Unit Specification

|                            |          |
|----------------------------|----------|
| Refrigerant Type           | R410A    |
| Refrigerant Charge (oz)    | 141.12   |
| ODU Sound Pressure (dB(A)) | 59       |
| IDU Sound Pressure (dB(A)) | 53/47/41 |
| ODU Net Weight (lbs)       | 231.5    |
| IDU Net Weight (lbs)       | 94.8     |
| Dehumidifying (Pint/h)     | 4.5      |

#### Fan

|                             |                        |
|-----------------------------|------------------------|
| ODU / IDU Type              | Axial-flow/Centrifugal |
| Quantity (ODU + IDU)        | 2+1                    |
| Motor/Drive                 | Direct Drive           |
| ODU Max Air Flow Rate (CFM) | 3880                   |
| IDU Air Flow Rate (CFM)     | 1350                   |



#### Compressor

|                                       |                 |
|---------------------------------------|-----------------|
| Cooling Operation Ambient temp. Range | 0~115 °F        |
| Heating Operation Ambient temp. Range | 0~75 °F         |
| Compressor Type                       | Inverter Rotary |
| Fan Motor Power Output (HP)           | 1/6 x 2         |
| Crankcase Heater                      | Yes             |

#### Electrical Specification

|                                     |                 |
|-------------------------------------|-----------------|
| Power Supply                        | 208-230V / 60Hz |
| Communications Wire Size(ODU/IDU)   | AWG 10/17       |
| MOP (A)                             | 70              |
| MCA (A)                             | 45              |
| Cooling Rated Amps (A)              | 34.27           |
| Heating Rated Amps (A)              | 33.25           |
| Compressor RLA (A)                  | 32.5            |
| Indoor Fan Motor Full Load Amp (A)  | 1.5             |
| Outdoor Fan Motor Full Load Amp (A) | 2 x 2           |
| Nominal Cooling Power Input (kW)    | 5.5             |
| Nominal Heating Power Input (kW)    | 4.8             |

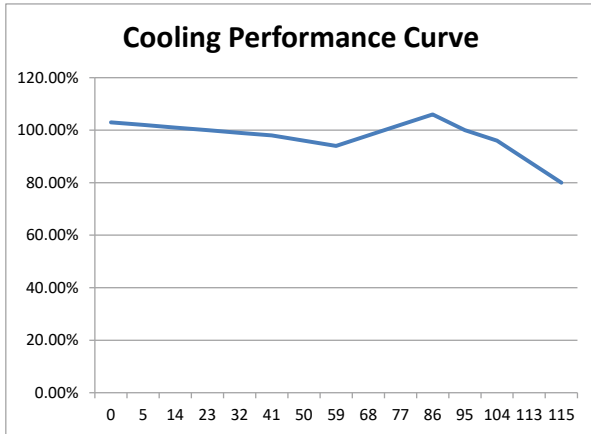
#### Piping

|   |      |
|---|------|
| Liquid Line (in, OD)                      | 3/8  |
| Gas Line (in, OD)                         | 5/8  |
| Additional Refrigerant (oz./ft.)          | 0.6  |
| Max Pipe Length (ft.)                     | 164  |
| Piping Length (no add'l refrigerant, ft.) | 25   |
| Max Elevation (ft.)                       | 98.4 |

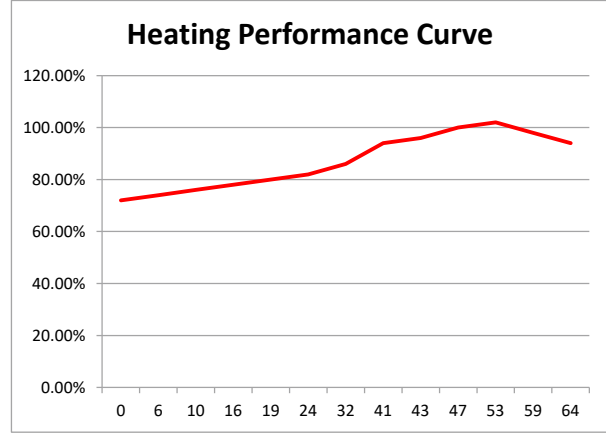
AHRI certification Ref #

|                       |       |
|-----------------------|-------|
| Job Name:             | Date: |
| System Reference No.: |       |
| Engineer Signature:   |       |

### Cooling Performance F / %

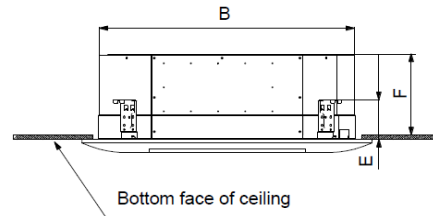
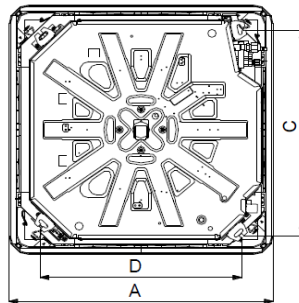


### Heating Performance F / %



### Outline Dimension Diagram

|   | mm   | (inch)   |
|---|------|----------|
| A | 1040 | (41)     |
| B | 910  | (35-7/8) |
| C | 842  | (33-1/8) |
| D | 788  | (31)     |
| E | 170  | (6-3/4)  |
| F | 290  | (11-3/8) |



|   |      |          |
|---|------|----------|
| A | 958  | (37-3/4) |
| B | 412  | (16-1/4) |
| C | 1349 | (53-1/8) |
| D | 572  | (22-1/2) |
| E | 376  | (14-3/4) |

